



School Support Levy Replacement



Impact of a levy failure

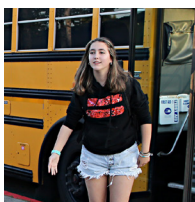
The following areas are at risk for reduction:

Student Supports



Reduction of **≈128 staff positions in schools**. This includes things like:

- Advanced Placement classes
- Elementary crossing guards
- Elementary paraeducators
- Electives
- Elementary student support specialists
- Interventions
- School office support
- Small class sizes
- Staff professional learning
- World language



Reduction of **transportation budget** by 15%. This includes things like:

- Number of bus stops would be reduced.
- Students riding the bus for longer each way.



Significant reduction of **technology budget**. This includes things like:

- Fewer staff to support technology.
- Defer device replacement.
- Fewer software applications.



Reduction of **≈18 physical, social, and emotional support staff positions**. This includes things like:

- Classified staff
- Counselors
- Nurses
- Psychologists
- Social workers

There are legal requirements around special education services. We will continue to **provide all required services for special education**, so we would need to make reductions in other areas.

Safety



This includes things like:

- Reduction of 15 security staff.
- Elimination of 3 school resource officers.
- Reduction of 24 grounds, maintenance and custodial staff.
- Reduced community access to buildings.

Sports & Activities



Reduction to all **extracurriculars**. This includes things like:

- Possibly eliminating middle school sports.
- Pay-to-participate in high school sports.
- Pay-to-participate in clubs, drama, or music offered outside the school day.

Total Funding Lost

The levy qualifies us for additional state and federal funding. Without a levy, we lose more than local tax dollars.

| | |
|---------------------|--------------------------------------------------------------|
| \$21,000,000 | Estimated 2025 School Support Levy Funding |
| \$600,000 | Additional Funding: Local Effort Assistance |
| \$8,000,000 | Heavy Impact Aid Used for capital projects only. |
| \$29,600,000 | Total Funding Lost |

Election Day
is April 23, 2024.
Remember to vote.

Learn more about
the levy at
CKschools.org

